

EDGE

SUPPLY

Pro Tile Kits

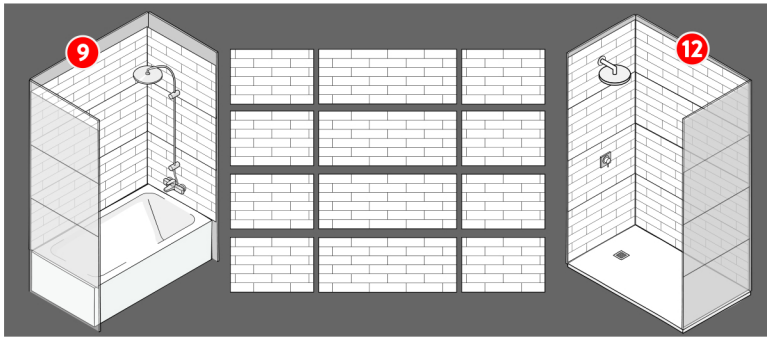
INSTALLATION GUIDE SHOWER & TUB SURROUND PRO KITS



CAUTION

Read this entire installation guide before beginning your installation. Know and understand all procedures, including proper and safe use of the tools you will use.

SHOWER & TUB SURROUND PRO KIT CONTENTS



Each kit contains enough tile panels to complete one standard-sized shower or tub surround replacement.

Shower Surround Pro Kit

- Contains 12 interlocking tile panels
- 4 Back wall panels = 24"H x 60"W
- 8 Side wall panels = 24"H x 36"W

Tub Surround Pro Kit

- Contains 9 interlocking tile panels
- 3 Back wall panels = 24"H x 60"W
- 6 Side wall panels = 24"H x 36"W

MATERIALS NOT INCLUDED

Additional Materials

- Edge trim
- Non-sanded grout
- Caulk
- Construction adhesive or Type 1 mastic



RECOMMENDED TOOLS & MATERIALS



Basic Toolkit

- Circular saw or oscillating tool
- Tape measure and pencil or marker
- Utility knife
- Drill and hole saw
- Levels
- Speed square or T-square
- Grout float, sponges and buckets
- Water proof caulk for finishing

PRECAUTIONS



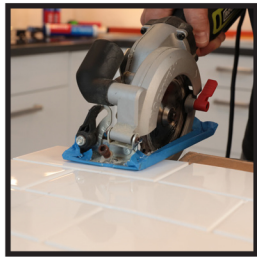
- **Always wear eye protection throughout the entire installation process.**
- Make sure your work area is clean and free of debris or tools that might pose a hazard.
- Consider using ear plugs and a dust mask if using power tools.
- Work carefully to reduce hazards and mistakes.

PREPARATION



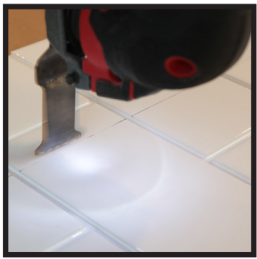
Surface prep

Make sure the mounting surface is smooth and solid. The mounting surface behind the tile panels needs to meet applicable code requirements. Tile can be attached to moisture-resistant drywall (such as green board and purple board), cement backer board or over existing tile. If installing over existing tile, make sure the tile is thoroughly cleaned of any mold, mildew or soap residue to ensure the construction adhesive will properly cure to the tile surface.



Cutting the tile: Straight and End Cuts

Use a workbench or solid work surface to cut the tile panel using a circular saw, oscillating tool or utility knife. After measuring, use a straight edge to mark the cut line. Use a circular saw to make straight cuts on the tile panel. Consider clamping the panel to your work surface for added stability.



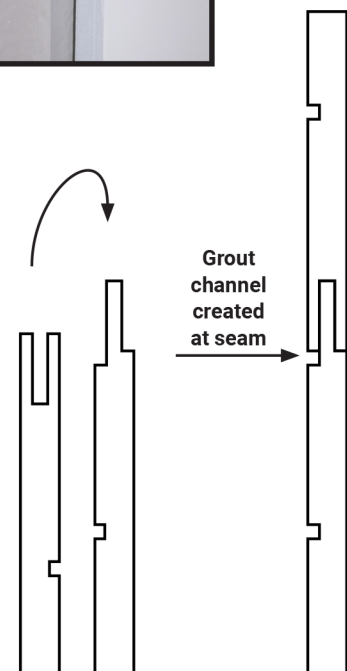
Cutting the tile: Access holes for pipes and fixtures

An oscillating tool or a standard hole saw for power drills can be used to cut access holes for pipes and fittings.



Attaching tile to wall

Install tile panels to the wall surface using construction adhesive or type1-mastics. Read the manufacturer's recommendations regarding surface prep, amount of adhesive to use and curing time. The tile panels are designed with a tongue-and-groove interlock that forms a watertight seal. This joint is also designed to automatically create a grout channel so no tile spacers are necessary. This process will be used throughout the entire install.



INSTALLATION

Workflow

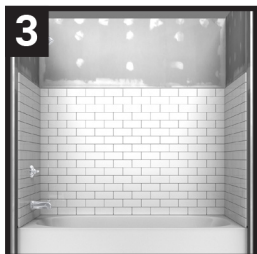
The Tub Surround Kit consists of 9 tile panels and the Shower Kit consists of 12 tile panels. It is designed to be installed in a specific order - this minimizes cutting and dramatically decreases the amount of time necessary to install the entire surround.



Step 1: First, install the bottom back wall panel. Using a tape measure, mark the left and right corners at 24" increments up the wall. This will be used to measure proper width to determine the fitment of the tile board. Depending on the width of the back wall, these panels may need to be cut and trimmed to fit. Make sure any cuts are all done to the same ends (for example, the left side ends) so that the tile pattern will match once all back panels are installed. Check for fit and level. Apply a 1/2" bead of clear silicone caulk in corner, starting at the bottom to the height of the first row. Then mount the tile panel to the wall using construction adhesive or type-1 mastic.



Step 2: Next, install the bottom side panels to complete the bottom row. Determine where the side pieces will end at the outside of the tub or shower side wall. Using a level, draw a vertical line to the height of the shower wall. Using this line, measure to the back wall to get the correct width top and bottom of the panel. Since walls are rarely square this will give the most precise fit for each panel moving up the wall. Make sure all cuts are made to the same side of each tile per wall (where the panel meets the back wall). Otherwise, the tile pattern, when stacked, may not match up properly.



Step 3: Install the next row of back and side panels on top of the first row. If done properly, a grout channel will automatically be created that matches the tile pattern. This watertight seam will become invisible even before grouting. The rows of panels can be installed using this same method as described in Step 1. Always first check the fit of each panel, including the tongue and groove, before adhering to the wall.



Step 4: Edging can be installed by first measuring the length needed for each edge, then install by sliding the edge trim under the installed tile before the glue sets. This same process is performed if edging is also applied along top of the tub enclosure. Refer to the edging manufacturer's instructions regarding inside and outside mitered corners.

GROUTING & FINISHING



Grouting can begin immediately.

Use only un-sanded or non-sanded grout. Apply grout in the exact same manner as you would when working with ceramic tile using a rubber float. Use a clean damp sponge to remove excess grout, then use a damp micro fiber towel to wipe off grout residue.



Finish for a Watertight Seal.

Once the grout has completely dried, caulk the inside corners and base. This will finish your watertight seal. Because the panels are monolithic, your shower or tub cannot be penetrated through the surface of the panel. Making the caulking of the inside corners and bottom edge to the tub or shower pan paramount to achieving your watertight seal. You can use any caulk available. Most grout manufacturers offer matching caulk. Clear silicone caulk is also an option.



866.715.EDGE • sales@edgeindsupply.com • edgeindsupply.com