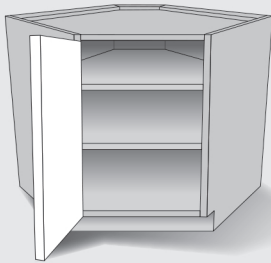


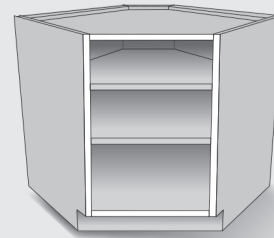
# Refacing Ordering Guidelines

You have these conditions:

**Angle Corner  
"45 Degree"**

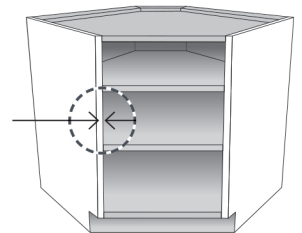


**Frameless Cabinet**



## Determine your door front sizes:

1. Download our helpful form to record your information the same way our website will ask for it.
2. Measure your end panel thickness. It will be 5/8" (0.625") or 3/4" (0.75").
3. Measure your cabinet opening to the closest 1/16" (0.0625").

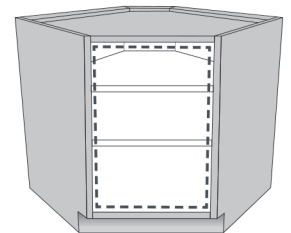


### To determine the width:

- Measure the width of opening and record on measurement form.

### To determine the height:

- If you have an adjacent door next to the cabinet opening you want to match, measure it's height and record on measurement form.
- If you have no adjacent doors to match, measure the height of the opening and add 1".



4. Write the dimensions of the door you need on the measurement form.



## What to order:

1. Order a door to cover opening with the dimensions determined above.
2. Order two (2) of the accessory item: **"I-O611: Hinge - 45 Deg Self-Closing Hinge FRMLSS."**