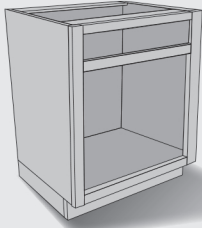


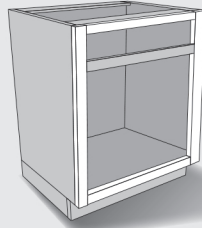
# Refacing Ordering Guidelines

## You have these conditions:

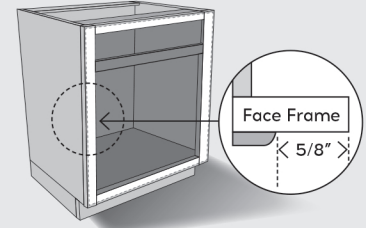
### No Existing Doors



### Framed Cabinet



### Minimum 5/8" Clearance On All Sides of Opening



**NOTE 1:** Your new doors will overlap the cabinet frames by 1/2" (0.5").

**NOTE 2:** If you have any cabinets with less than 5/8" (0.625") frame clearance, please call for assistance.



## Determine your door & drawer front sizes:

1. Download our helpful form to record your information the same way our website will ask for it.
2. Measure your cabinet opening to the closest 1/16" (0.0625"). Measure width first, then height.

**For all drawer fronts and door openings less than 22" wide, order 1 door.**

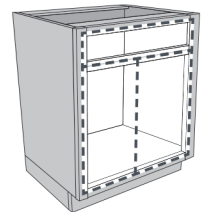
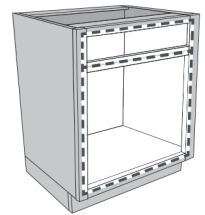
- Add 1" to the cabinet opening width and height.

**For door openings greater than 22" wide, order 2 doors.**

- Add 7/8" (0.875") to cabinet opening width, then divide by 2 to determine the door width.
- Add 1" to the opening height to get the door height.

Write the dimensions and quantities you need on the measurement form.

3. Double check that you haven't missed a part. The number of parts on the form should match the number of doors and drawers you need.



## What to order:

1. Order 1/2" overlay hinges.
2. Order doors and drawer fronts with the dimensions determined above.