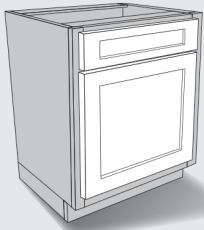


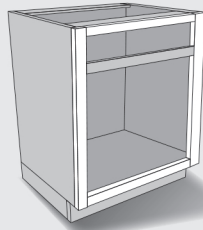
# Refacing Ordering Guidelines

You have these conditions:

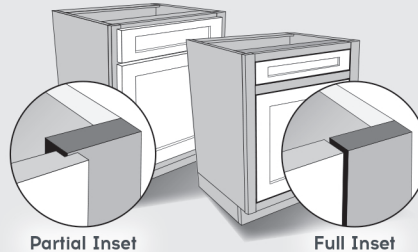
## Existing Doors



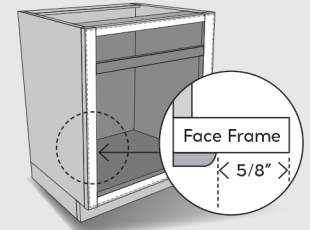
## Framed Cabinet



## Doors are Partially or Fully Inset into Cabinet Opening



## Minimum 5/8" Clearance On All Sides of Opening



**NOTE 1:** We only offer overlay doors. Your new doors will overlap the cabinet frames by 1/2" (0.5"). If you have any cabinets with less than 5/8" (0.625") frame clearance, please call for assistance.

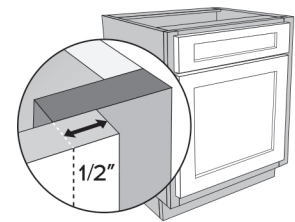
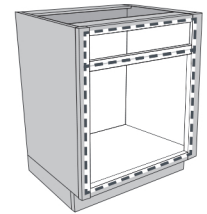


## Determine your door & drawer front sizes:

1. Download our helpful form to record your information the same way our website will ask for it.
2. Measure your cabinet openings to the closest 1/16" (0.0625"). Measure width first, then height.
  - Add 1" to the cabinet opening width and height to determine your new dimensions..

**Your new doors will overlap the cabinet frames by 1/2" (0.5").**

Write the dimensions and quantities you need on the measurement form.



3. Double check that you haven't missed a part. The number of parts on the form should match the number of doors and drawers you need.



## What to order:

1. Order 1/2" overlay hinges.
2. Order doors and drawer fronts with the dimensions determined above.