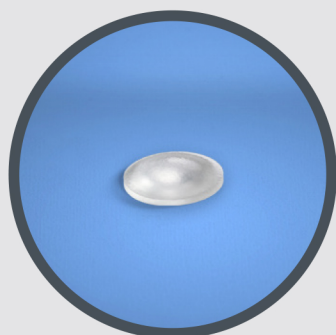
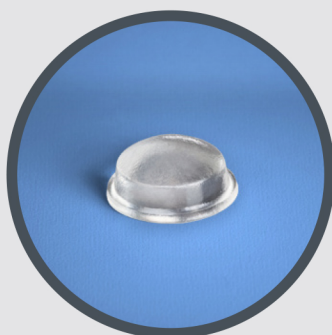


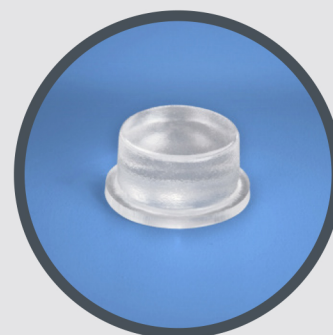
The domed shaped bumpers work best for softening cabinet doors and drawers from slamming, reducing noise, and extending the life of the cabinets.



**Small (I-O142)**  
DIAMETER .335" (8.5mm)  
HEIGHT .085" (2.2mm)  
Sheet of 75



**Medium (I-0030)**  
DIAMETER .440" (11.1mm)  
HEIGHT .200" (5.1mm)  
Sheet of 55



**Large (I-O410)**  
DIAMETER .500" (12.7mm)  
HEIGHT .250" (6.4mm)  
Sheet of 40

### BUMPERS TO BE USED BY CABINET CONSTRUCTION AND STYLE

#### FRAMELESS

STYLE	DOOR	DRAWER FRONT
SHAKER	Small	Small
SLAB	Small	Small
FUSION	Small	Medium

#### FRAMED

STYLE	DOOR	DRAWER FRONT
SHAKER	Medium	Medium
SLAB	Medium	Medium
FUSION	Medium	Large